

SMART

Simante Network
Communication Equipment

YUYAO SIMANTE NETWORK COMMUNICATION EQUIPMENT CO., LTD

Mailing Address:

Add: Fumin Industrial Zone, Moushan Town, Yuyao ,Ningbo, Zhejiang Province, China,315456

International Trade Department:

Tel: 86-574-62495827/62495823

Fax:86-574-62495826

E-mail:kelly@smartyy.com, ting@smartyy.com

Domestic Trade Department:

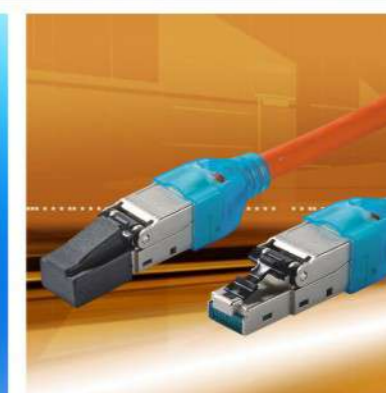
Tel: 86-574-62497262

Fax:86-574-62495820

E-mail: luo@smartyy.com



WWW.SMARTYY.COM



www.smartyy.com

YUYAO SIMANTE NETWORK COMMUNICATION EQUIPMENT CO., LTD



About

Simante Network
Communication Equipment



Certification Approval

Simante Network
Communication Equipment

Yuyao Simante Network Communication Equipment CO., Ltd is a professional manufacturer of network cabling solutions and fiber optic products, which is concentrate on the design , development, sales and services.

As an ISO9001: 2008 approved company, SIMANTE carries out a strict quality assurance system, and its excellence quality and service got recognition from all clients in Europe, Australia, Africa, Middle East and Southeast Asia, and be their first choice.

As a professional manufacturer, SIMANTE has an excellent engineer team, has 15 years experience of mold opening, provides different kinds of services.

SIMANTE Located in Yuyao, NingBo, Zhejiang Province, closed to the seaport and airport, with convenient transportation and with the name of CITY OF MOLD and CITY OF PLASTIC..

Our Brand Version is: Pursuit of Excellence. Marketing Version is: Dare to Lead. Manufacturing Version is: Better of the Best.





Quality Control

Simante Network
Communication Equipment



INDEX

Simante Network
Communication Equipment



1 Projector Tester



2 Salt Spary Tester



3 Auto-Tester of Insertion Life



4 Auto-Tester of On-Off



5 Auto-Tester of On-Off



6 FLUKE Tester



7 Auto-Tester of Color Code

1.Lan Cables

1

1.1 Cable & Patch Cord

1

2.CAT.6A + System

2

3.Male Connector

3-4

4.CAT6A System

5-12

4.1 CAT.6A Patch Panel

5-9

4.2 CAT6A Keystone Jack

10-12

5.CAT6 System

13-21

5.1 CAT6 Patch Panel

13-17

5.2 CAT6 Keystone Jack

18-21

6.CAT5E System

22-25

6.1 CAT5E Patch Panel

22-23

6.1 CAT5E Keystone Jack

24-25

7. CAT3 System

26-27

7.1 Voice Patch Panel

26

7.2 Voice Keystone Jack

27

8.Face Plate

28-36

8.1 86 Type Faceplate

28-29

8.2 Germany Type

30

8.3 French Type

31-32

8.4 UK Type

33

8.5 Australia Type

34

8.6 US Type

35

8.7 Surface Mount Box

36

9. Cable Manager & Wiring Block

37-38

9.1 Cable Manager

37

9.2 Wiring Block

38

10.Fiber Optic System

39-42

10.1 Fiber Patch Panel

39

10.2 Fiber Adapter & Cables

40

10.3 Fiber Optic Faceplate

41

10.4 Fiber Optic Mount Box

42

11.Network Tool

43-44

12.RJ45 Male Connector

45

13.Cabinet

46



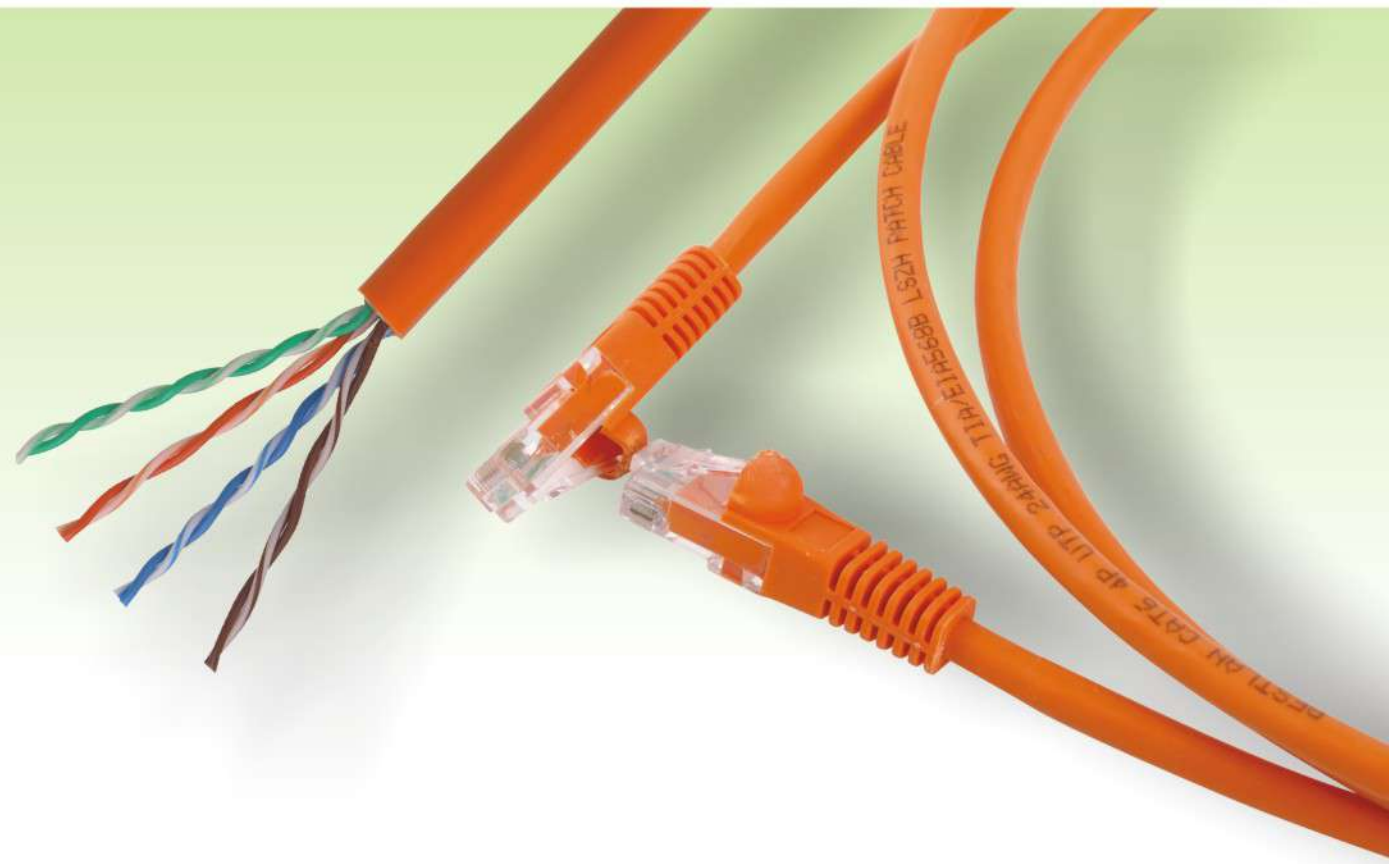
Cable & Patch Panel

Simante Network
Communication Equipment



CAT6A+ FTP System

Simante Network
Communication Equipment



**Shielded Patch Panel loaded with
CAT6A+ Keystone Jack**



SMT-2031-24P



SMT-2016-24P



SMT-1043T8C6A-FTP

Color

- Grey
- White
- Yellow
- Orange
- Green
- Blue

Category

- Category 7
- Category 6a
- Category 6
- Category 5e



Order Information

Part Number	Description	Inner Box	Carton	Carton Measurement
SMT-2031-24P	Unloaded 24 Port FTP Patch Panel	1PCS	10PCS	L51*W27*H26CM
SMT-1043T8C6A-FTP	CAT.6A + Shielded Toolless Keystone Jack	50PCS	500PCS	L57*W35*H32CM
SMT-2016-24P	Unloaded 24 Port FTP Patch Panel	1PCS	10PCS	L53*W32*H23CM



Male Connector

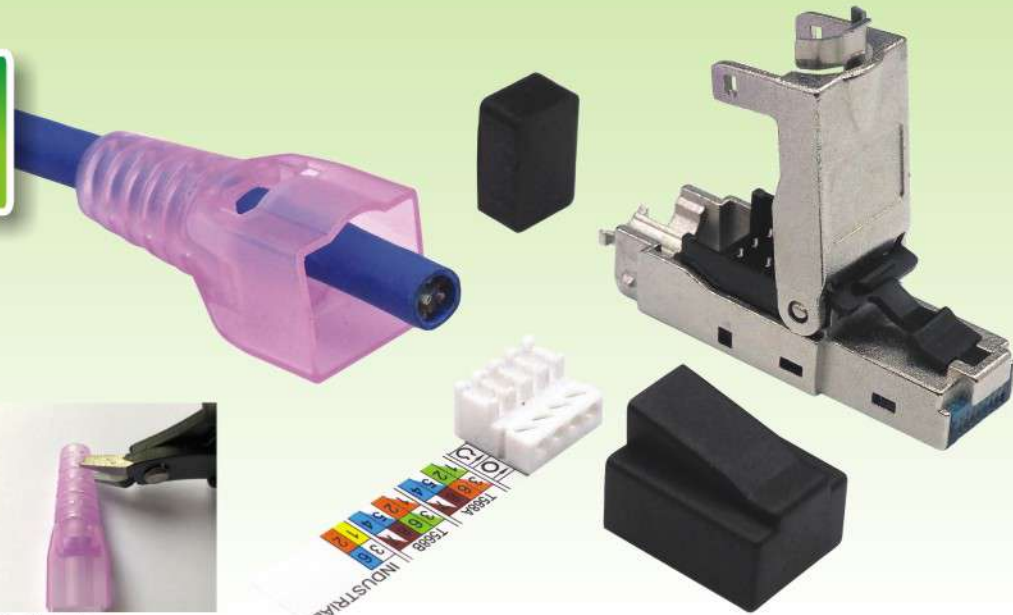
Simante Network
Communication Equipment



Male Connector

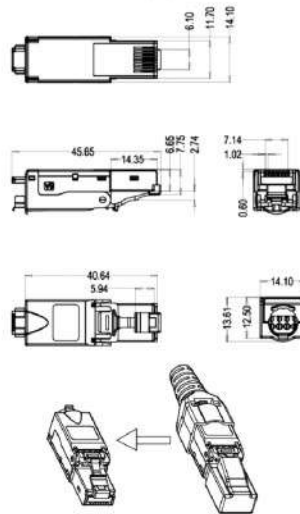
Simante Network
Communication Equipment

Shielded CAT6A+ Plug Tooless Type



SMT-3011T8C6A-FTP

1. Prepare the products and Other accessories
2. Removal of exterior sheathing
3. Use the cable pass through the boot
4. According to T568A or T568B to put the cables on the cap.
5. According to T568A or T568B to put the cables on the cap, and then cut the extra cables.
6. Put the cap on the IDC Part.
7. Push the metal part, and make it tightly
8. Make the boot on the bottom of the connector, and later use cable tie to make it lock tightly.



Order Information

Part Number	Description	Inner Box	Carton	Carton Measurement
SMT-3011T8C6A-FTP	Cat6A Shielded Tooless Male Modular Plug	50PCS	500PCS	L57CM*W35CM*H32CM

Shielded CAT6A+ Plug Tooless Type



SMT-3014T8C6A-SFTP

1. Connector assembly view
2. Connector assembly view
3. Connector assembly view
4. Connector assembly view

Technical Detail

Short name : CAT6 A Shielded Connector

Mechanical Characteristics

Insertion force: ≤ 30N
 Durability (mating cycles) : ≥ 750
 Reusable IDC ≤ 4 cycles
 Material: IDC contacts Phosphor Bronze With nickel-plated
 Material: Spring Contact Phosphor Bronze
 Material: IDC Plastic PC UL 94 V2
 Material: Dust Cap PC UL 94 V2
 Material: Boot PP
 Material: PCB PCB FR4 UL 94 V0
 Material: shielding housing zinc diecast, nickel-plated
 Material: connector housing PC UL 94 V2
 *Mating Requirements Cu-Conductor diameter: solid AWG 23-26 Cable
 *Mating Requirements Cu-Conductor diameter: stranded AWG 22-26 Cable
 Crimp tool

Climatic Characteristics

Temperature range -40°C ... 70°C

Standards

Connectors IEC 60603-7-51

Transmission Characteristics

Gigabit Ethernet acc. to IEEE 802.3
 10 Gigabit Ethernet acc. to IEEE 802.3an: Adequate for 10 Gigabit Ethernet

Order Information

Part Number	Description	Inner Box	Carton	Carton Measurement
SMT-3014T8C6A-SFTP	Cat6A Shielded Tooless Male Modular Plug	50PCS	500PCS	L57CM*W35CM*H32CM



CAT.6A FTP Loaded Patch Panel

Simante Network
Communication Equipment

Shielded Patch Panel loaded with
different CAT.6A Keystone Jack



SMT-2013-24S



SMT-1033T8C6A-FTP



SMT-1047T8C6A-FTP

Order Information				
Part Number	Description	Inner Box	Carton	Carton Measurement
SMT-2013-24S	Unloaded 24 Port FTP Patch Panel	1PCS	10PCS	L51*W27*H26CM
SMT-1047T8C6A-FTP	CAT.6A Shielded Toolless Keystone Jack, Slim	50PCS	500PCS	L57*W35*H32CM
SMT-1033T8C6A-FTP	CAT.6A Shielded Toolless Keystone Jack	50PCS	500PCS	L57*3W5*H32CM



CAT.6A UTP Loaded Patch Panel

Simante Network
Communication Equipment

Unshielded Patch Panel loaded with
different CAT.6A Keystone Jack



SMT-2013-24P



SMT-1033T8C6A

Order Information				
Part Number	Description	Inner Box	Carton	Carton Measurement
SMT-2013-24P	Unloaded 24 Port UTP Patch Panel	1PCS	10PCS	L51*W27*H26CM
SMT-1033T8C6A	CAT.6A UTP Toolless Keystone Jack	50PCS	500PCS	L57*W35*H32CM



SMT-2021-24P



SMT-1021D8C6A

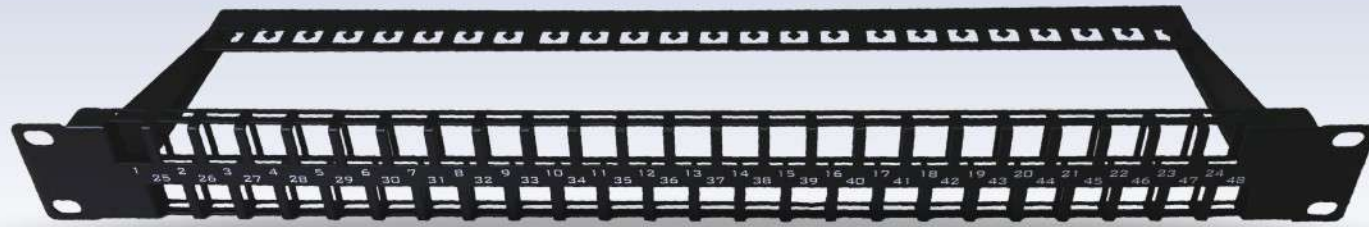
Order Information				
Part Number	Description	Inner Box	Carton	Carton Measurement
SMT-2021-24P	Unloaded 24 Port Angle UTP Patch Panel	1PCS	10PCS	L55*W36*H27CM
SMT-1021D8C6A	CAT.6A UTP 110 IDC & Krone IDC Keystone Jack	50PCS	500PCS	L57*W35*H32CM



CAT6A UTP Loaded Patch Panel

Simante Network
Communication Equipment

Unshielded CAT6A Patch Panel with CAT.6A Keystone Jack



SMT-2035-48P



Order Information

Part Number	Description	Inner Box	Carton	Carton Measurement
SMT-2035-48P	Unloaded 48 Port UTP Patch Panel	1PCS	10PCS	L55CM*W36CM*H27CM

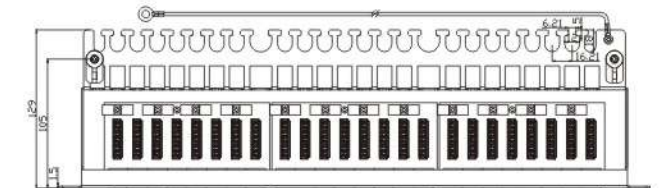
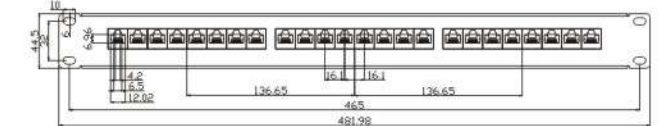
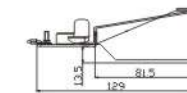
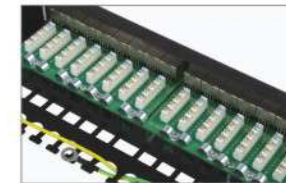


CAT.6A Shielded Patch Panel

Simante Network
Communication Equipment



SMT-2033K24C6A-FTP



Order Information

Part Number	Description	Inner Box	Carton	Carton Measurement
SMT-2033K24C6A-FTP	CAT.6A 24 Port FTP Krone IDC Patch Panel	1PCS	10PCS	L55CM*W36CM*H27CM



CAT.6A Unshielded Patch Panel

Simante Network
Communication Equipment

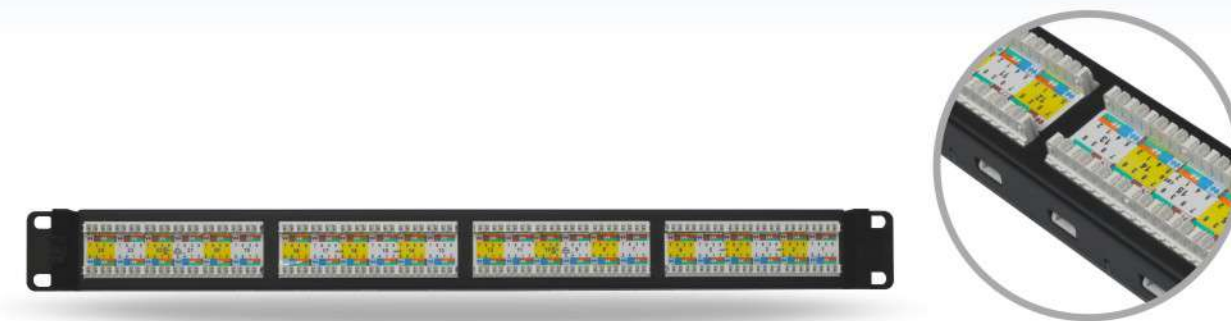


CAT.6A Shielded Keystone Jack

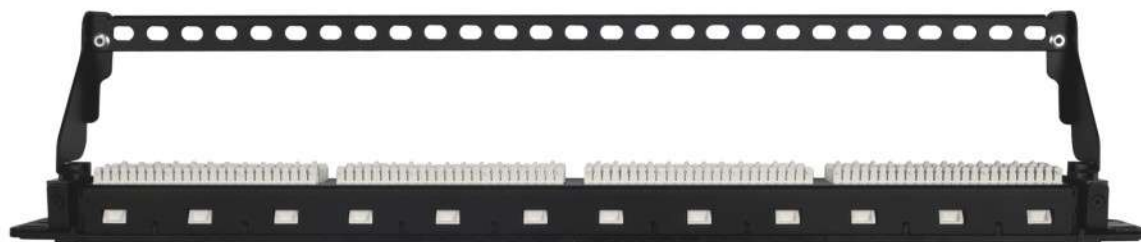
Simante Network
Communication Equipment



SMT-2029H24C6A



SMT-2029H24C6A



SMT-2029H24C6A

Order Information

Part Number	Description	Inner Box	Carton	Carton Measurement
SMT-2029H8C6	CAT.6 24 Port UTP 110 IDC Patch Panel	1PCS	10PCS	L53CM*W32CM*H23CM



SMT-1043T8C6A-FTP



SMT-1048H8C6A-FTP

90 Degree Toolless Type

Physical Characteristics

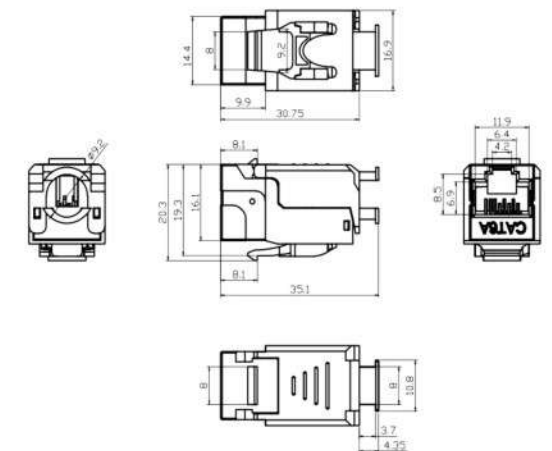
Jack Contact	phosphor bronze, 6-50μ inch gold plated over nickel
IDC Contacts	100μ inch nickel plated over phosphor bronze
PCB	FR-4 ,UL94V-0
Housing	Zinc Die Casting

Electrical Characteristics

Dielectric Strength	1000V RMS for 1min
Current Rating	1.5Amp Max.
Insulation Resistance	10MΩ Min.
Contact Resistance	2mΩ per contact
Temperature Range	-10°C to 60°C
Humidity	10%~90%; non condensing
Insertion Life	>2000 mating cycles
IDC Accept	22-26 AWG Solid Cable

Applications

- 1000BASE-T Gigabit Ethernet
 - 100BASE-TX Fast Ethernet.
 - 10BASE-T Ethernet.
 - Voice, Video and other applications.
- All the products are verified to the electrical characteristics required in the directive.



Order Information

Part Number	Description	Inner Box	Carton	Carton Measurement
SMT-1043T8C6A-FTP	CAT.6A+ Shielded Toolless Keystone Jack	50PCS	500PCS	L57CM*W35CM*H22CM
SMT-1048H8C6A-FTP	CAT.6A FTP 110 Keystone Jack	50PCS	500PCS	L57CM*W35CM*H22CM



CAT.6A Shielded Keystone Jack

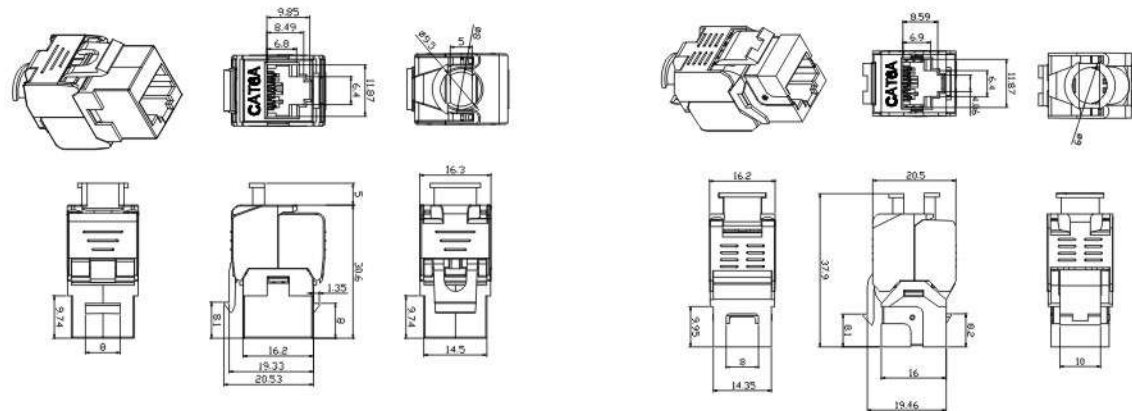
Simante Network
Communication Equipment



SMT-1041T8C6A-FTP



SMT-1047T8C6A-FTP



Physical Characteristics

Jack	Phosphor bronze, 6-50µ inch gold plating over nickel in contact area
IDC	100µ inch nickel plated over phosphor bronze
Shielded Cover	50-60µ inch nickel plated over zinc alloy
PCB	FR-4 ,UL94V-0
Housing: Zinc Die Casting	

Electrical Characteristics

Dielectric Strength	1000V RMS for 1 min
Current Rating	1.5Amp Max.
Insulation Resistance	10MΩ Min.
Contact Resistance	2mΩ per contact
Temperature Range	-10°C to 60°C
Humidity	10%~90%; non condensing
Insertion Life	>2000 mating cycles
IDC Accept	22-26 AWG Solid Cable

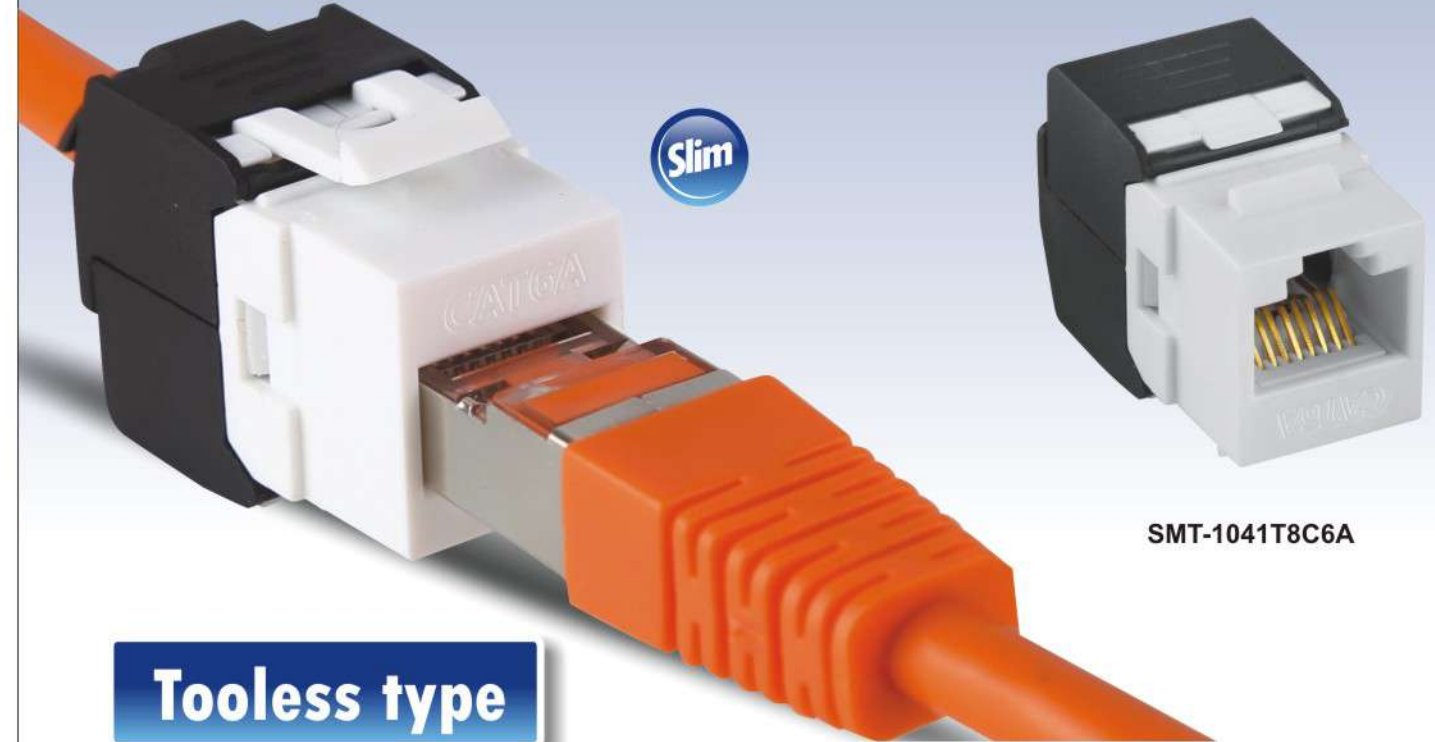
Order Information

Part Number	Description	Inner Box	Carton	Carton Measurement
SMT-1047T8C6A-FTP	CAT.6A FTP Tooless Keystone Jack, Slim	50PCS	500PCS	L57*W35*H32CM
SMT-1041T8C6A-FTP	CAT.6A FTP Tooless Keystone Jack, Slim	50PCS	500PCS	L57*W35*H32CM



CAT.6A Unshielded Keystone Jack

Simante Network
Communication Equipment



SMT-1041T8C6A

Tooless type



SMT-1034T8C6A

Coupler



SMT-1033T8C6A

Tooless

Order Information

Part Number	Description	Inner Box	Carton	Carton Measurement
SMT-1041T8C6A	CAT.6A UTP Tooless Keystone Jack, Slim	50PCS	500PCS	L57*W35*H22CM
SMT-1033T8C6A	CAT.6A UTP Tooless Keystone Jack	50PCS	500PCS	L57*W35*H22CM
SMT-1034T8C6A	CAT.6A Coupler Keystone Jack	50PCS	500PCS	L57*W35*H22CM



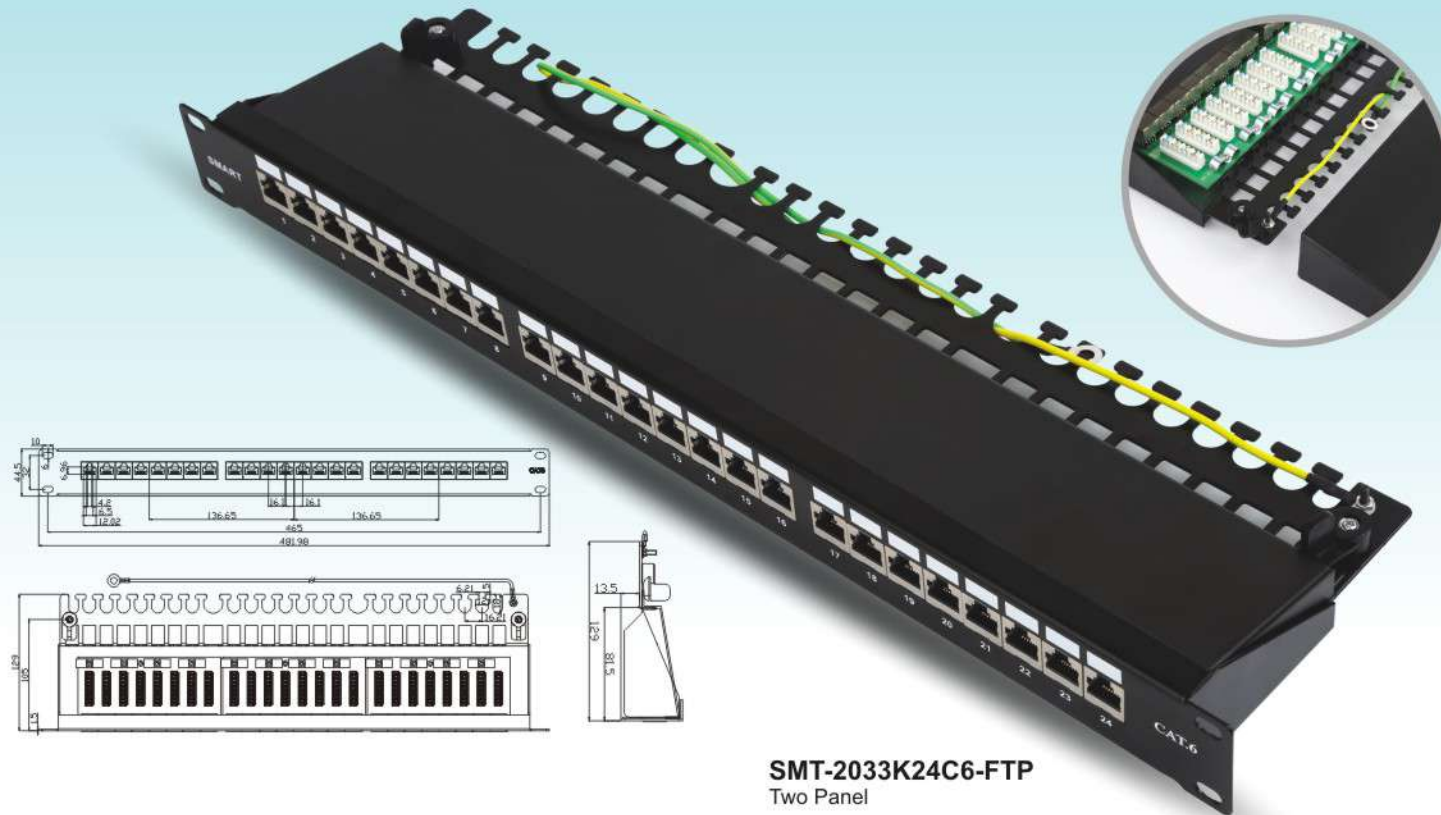
CAT.6 Shielded Patch Panel

Simante Network
Communication Equipment

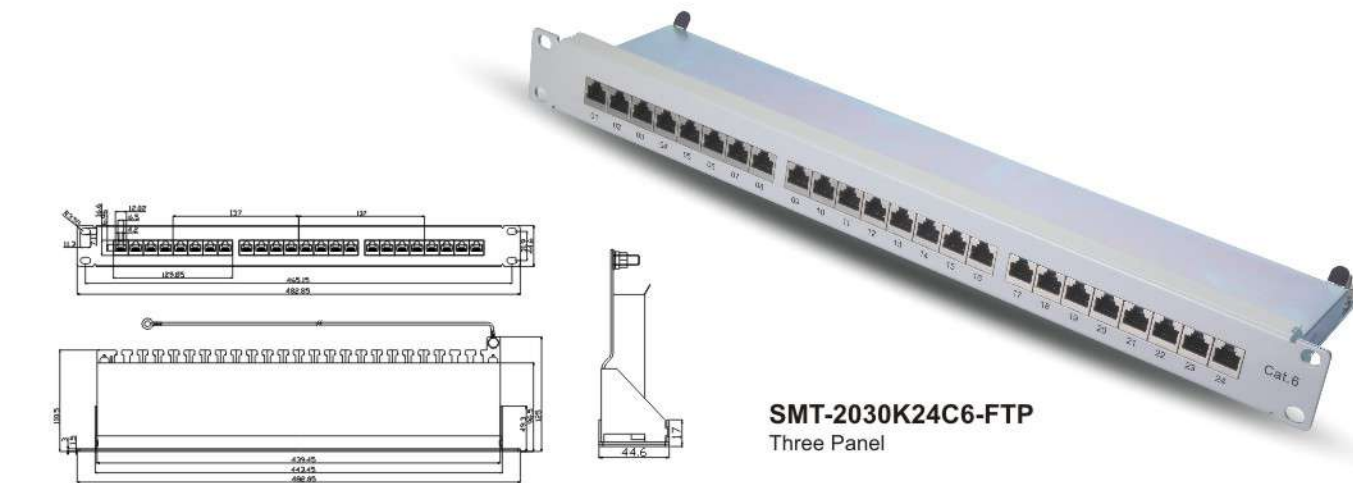


CAT.6 Shielded Patch Panel

Simante Network
Communication Equipment



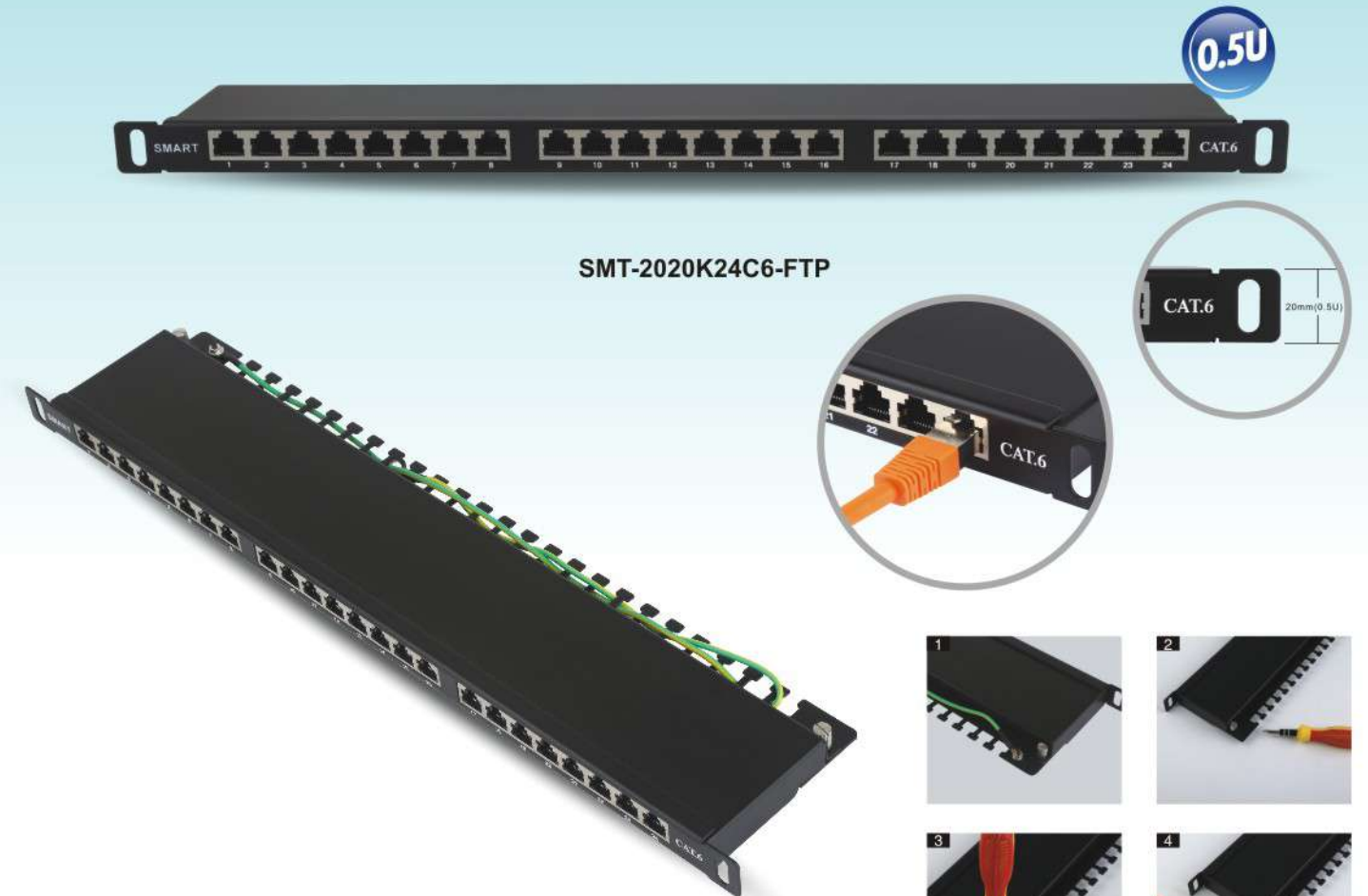
SMT-2033K24C6-FTP
Two Panel



SMT-2030K24C6-FTP
Three Panel

Order Information

Part Number	Description	Inner Box	Carton	Carton Measurement
SMT-2033K24C6-FTP	CAT.6 24 Port FTP Krone IDC Patch Panel, Black	1PCS	10PCS	L55*W36*H27CM
SMT-2030K24C6-FTP	CAT.6 24 Port FTP Krone IDC Patch Panel, Gray	1PCS	10PCS	L55*W36*H27CM



SMT-2020K24C6-FTP

Technical Details

Electrical:

Current Rating: 1.5 Amps
Insulation Resistance: 500 M ohms(MIN)
Contact Resistance: 20m ohms(Max)
DC Resistance: 0.1 ohm MAX

Mechanical Specification:

IDC Punch Down Cycle: >250 mating cycles
RJ45 Insertion Life: >750 mating cycles
IDC Accept: 22-26 AWG Solid Wire

Material:

Panel: 1.5mm thickness metallic panel/RAL 9005
Spring: Phosphor Bronze with gold-painted (3U~50U) over nickel-painted.
IDC Contact: Phosphor Bronze with Tin-painted
Plastic: PC

Order Information

Part Number	Description	Inner Box	Carton	Carton Measurement
SMT-2020K24C6-FTP	CAT.6 24 Port FTP Krone IDC Patch Panel	1PCS	10PCS	L53*W32*H23CM



CAT.6 Unshielded Patch Panel

Simante Network
Communication Equipment



SMT-2026H24C6



SMT-2022K24C6



SMT-2029H24C6



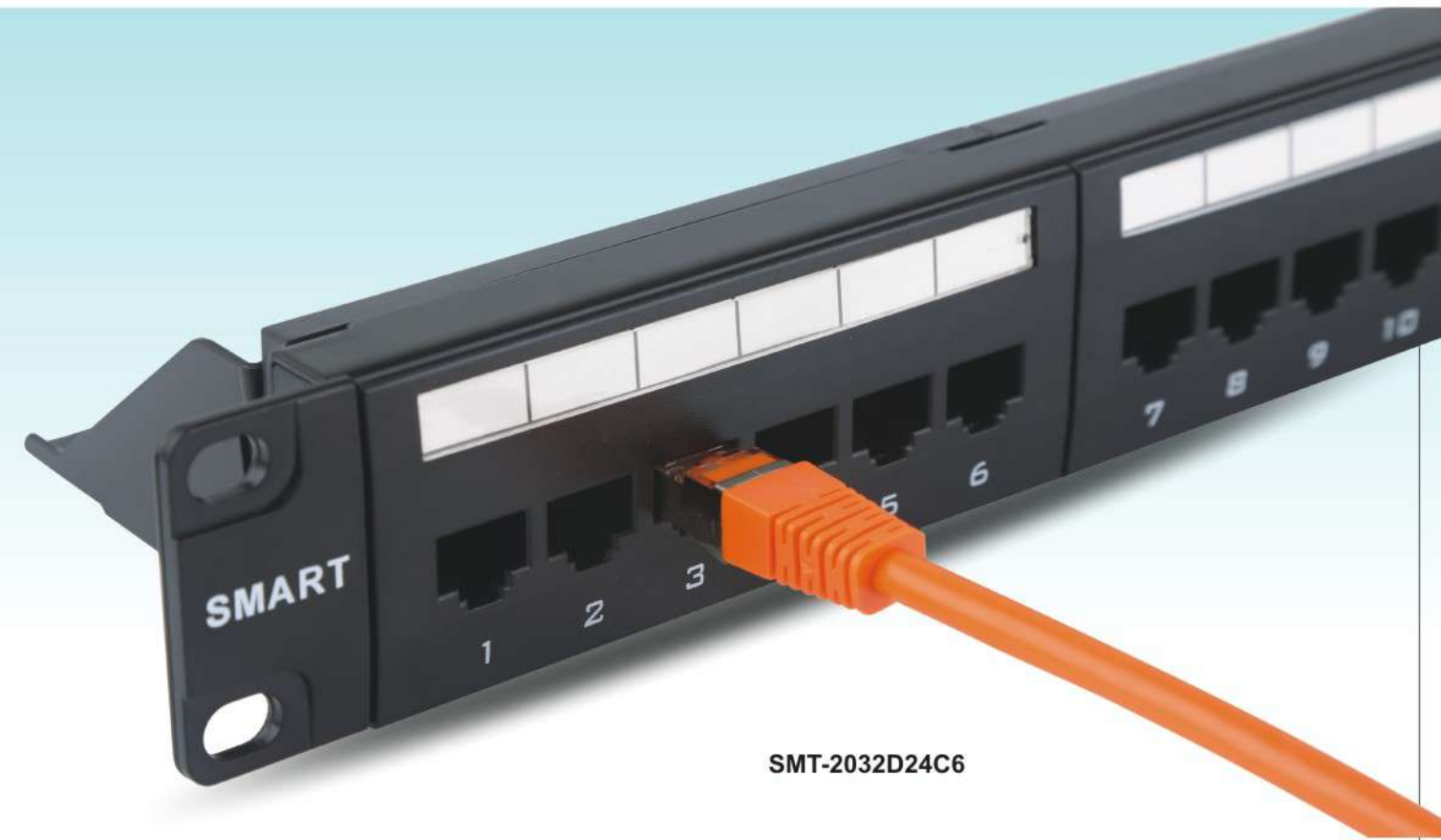
Order Information

Part Number	Description	Inner Box	Carton	Carton Measurement
SMT-2029H24C6	CAT.6 24 Port UTP 110 IDC Patch Panel	1PCS	10PCS	L53*W32*H23CM
SMT-2022K24C6	CAT.6 24 Port UTP Krone IDC Patch Panel	1PCS	10PCS	L53*W32*H23CM
SMT-2026H24C6	CAT.6 24 Port UTP 110 IDC Patch Panel	1PCS	20PCS	L53*W32*H23CM



CAT.6 Unshielded Patch Panel

Simante Network
Communication Equipment



SMT-2032D24C6



SMT-2032D12C6



SMT-2032D48C6

Order Information

Part Number	Description	Inner Box	Carton	Carton Measurement
SMT-2032D24C6	CAT.6 24 Port UTP 110 IDC & Krone IDC Patch Panel	1PCS	10PCS	L53*W32*H23CM
SMT-2032D48C6	CAT.6 48 Port UTP 110 IDC & Krone IDC Patch Panel	1PCS	10PCS	L53*W32*H23CM
SMT-2032D12C6	CAT.6 12 Port UTP 110 IDC & Krone IDC Patch Panel	1PCS	20PCS	L53*W32*H23CM



CAT.6 Unshielded Patch Panel

Simante Network
Communication Equipment



SMT-2012D24C6
110 & Krone IDC



SMT-2018H24C6
110 IDC



SMT-2020K24C6
Krone IDC



SMT-2020K48C6
Krone IDC



SMT-2022D24C6
110 & Krone IDC



SMT-2026H24C6
110 IDC



SMT-2030K24C6
Krone IDC



SMT-2034K24C6
Krone IDC



CAT.6 Shielded Keystone Jack

Simante Network
Communication Equipment



SMT-1013H8C6-FTP



SMT-1034T8C6-FTP



SMT-1016D8C6-FTP



SMT-1033T8C6-FTP



SMT-1041T8C6-FTP



Order Information

Part Number	Description	Inner Box	Carton	Carton Measurement
SMT-1033T8C6-FTP	CAT.6 FTP Toolless Keystone Jack	50PCS	500PCS	L57*W35*H22CM
SMT-1013H8C6-FTP	CAT.6 FTP 110 IDC Keystone Jack	40PCS	400PCS	L57*W35*H22CM
SMT-1034T8C6-FTP	CAT.6 FTP Toolless Coupler	50PCS	500PCS	L57*W35*H22CM
SMT-1041T8C6-FTP	CAT.6 FTP Toolless Keystone Jack, Slim	50PC	500PCS	L57*W35*H22CM
SMT-1016D8C6-FTP	CAT.6 FTP 110 IDC & Krone IDC Keystone Jack	40PCS	400PCS	L57*W35*H22CM



CAT.6 Unshielded Keystone Jack

Simante Network
Communication Equipment

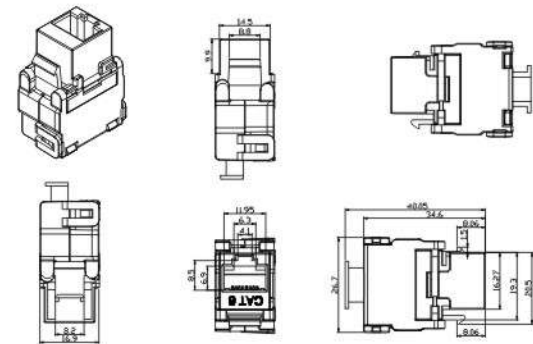


CAT.6 Unshielded Keystone Jack

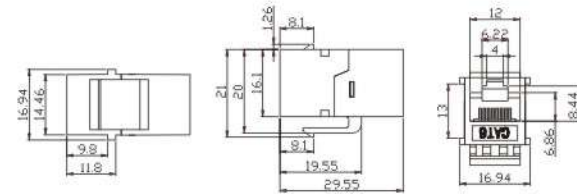
Simante Network
Communication Equipment



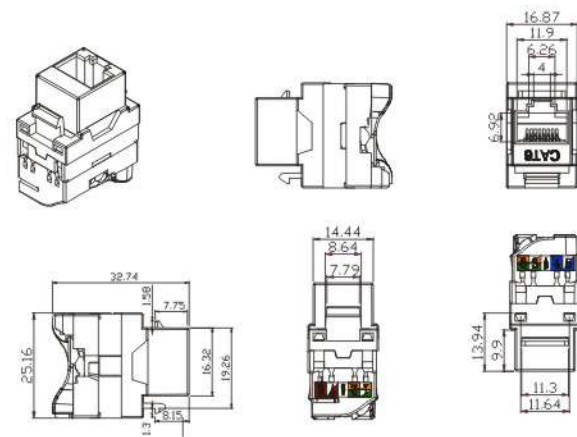
SMT-1033T8C6



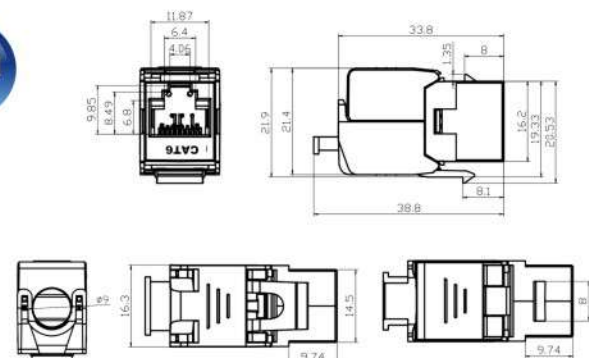
SMT-1034T8C6



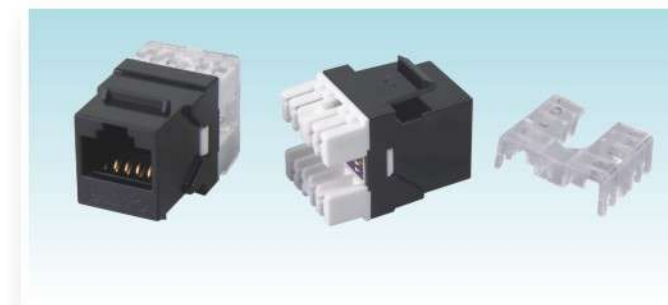
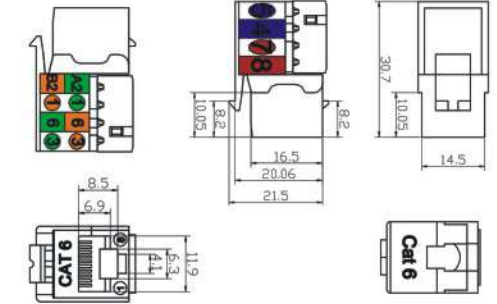
SMT-1042X8C6



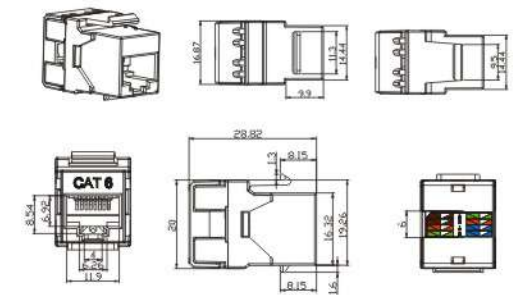
SMT-1041T8C6



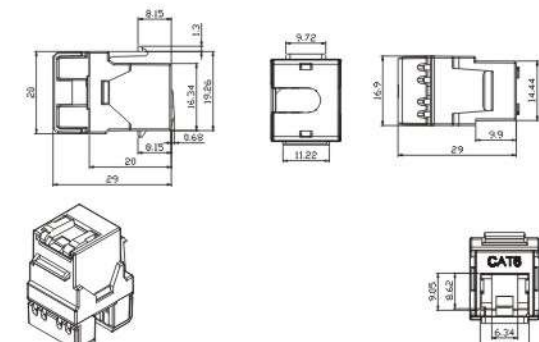
SMT1014H8C6



SMT-1021D8C6



SMT-1021D8C6(B)





CAT.6 Unshielded Keystone Jack

Simante Network
Communication Equipment



SMT-1021D8C6-AU
110 & Krone IDC



SMT-1013H8C6
110 IDC



SMT-1016D8C6
110 & Krone IDC



SMT-1018H8C6
110 IDC



SMT-1019K8C6
Krone IDC



SMT-1020H8C6
110 IDC



SMT-1022T8C6
Toolless



SMT-1027D8C6
110 & Krone IDC



SMT-1028T8C6
Toolless



SMT-1040K8C6
Krone IDC



SMT-1035K8C6
Krone IDC

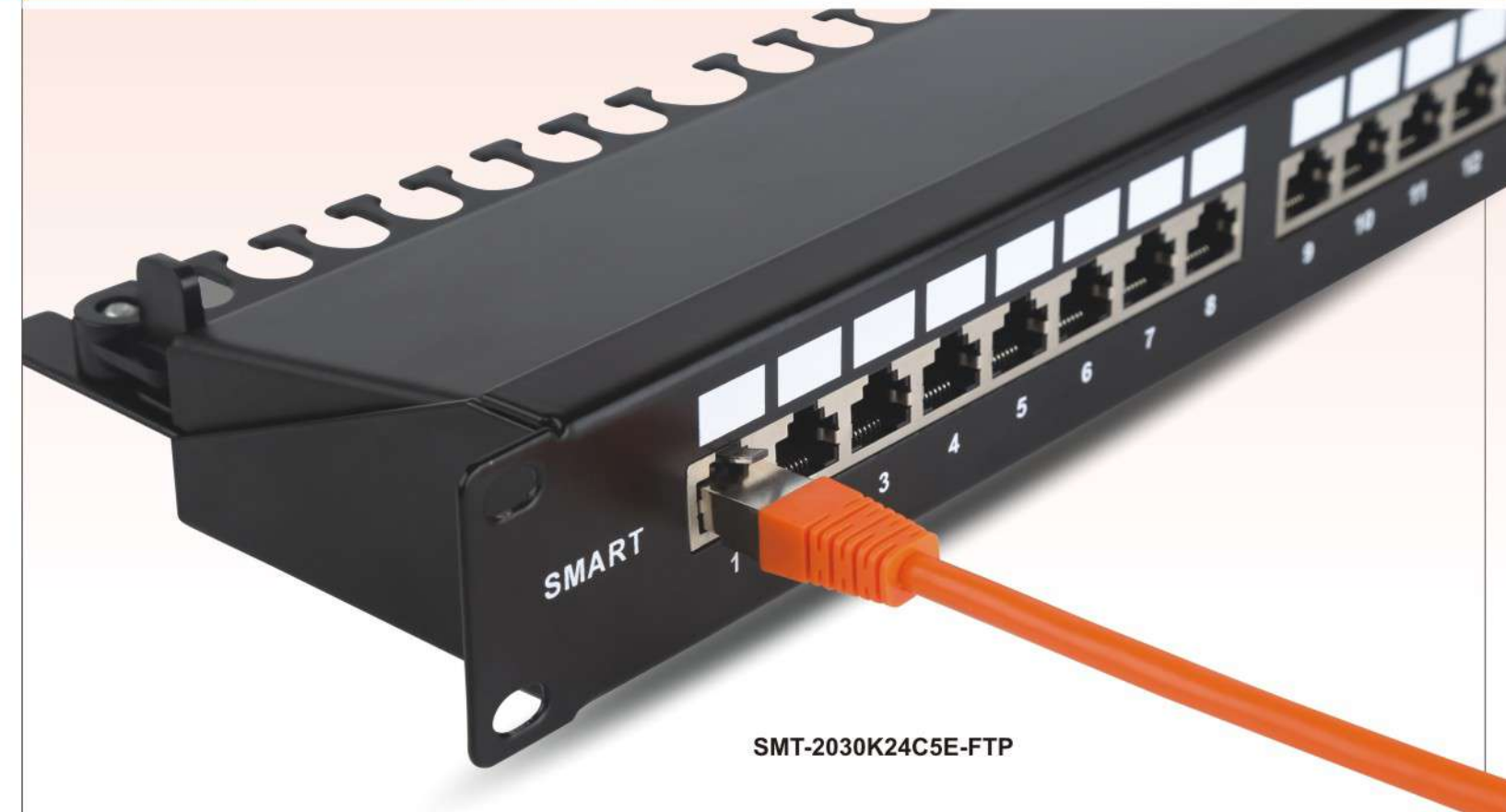


SMT-1021H8C6
110 IDC



CAT.5E Shielded Patch Panel

Simante Network
Communication Equipment



SMT-2030K24C5E-FTP



SMT-2020K24C5E-FTP



Technical Details

Electrical:

Current Rating: 1.5 Amps
Insulation Resistance: 500 M ohms(MIN)
Contact Resistance: 20m ohms(Max)
DC Resistance: 0.1 ohm MAX

Mechanical Specification:

IDC Punch Down Cycle: >250 mating cycles
Rj45 Insertion Life: >750 mating cycles
IDC Accept: 22-26 AWG Solid Wire

Material:

Panel: 1.5mm thickness metallic panel/RAL 9005
Spring: Phosphor Bronze with gold-painted (3U~50U) over nickel-painted.
IDC Contact: Phosphor Bronze with Tin-painted
Plastic: PC

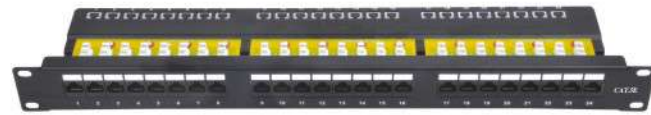
Order Information

Part Number	Description	Inner Box	Carton	Carton Measurement
SMT-2020K24C5E-FTP	CAT.5E FTP Krone IDC Patch Panel	1PCS	10PCS	L53*W32*H23CM
SMT-2030K24C5E-FTP	CAT.5E FTP Krone IDC Patch Panel	1PCS	10PCS	L55*W36*H27CM

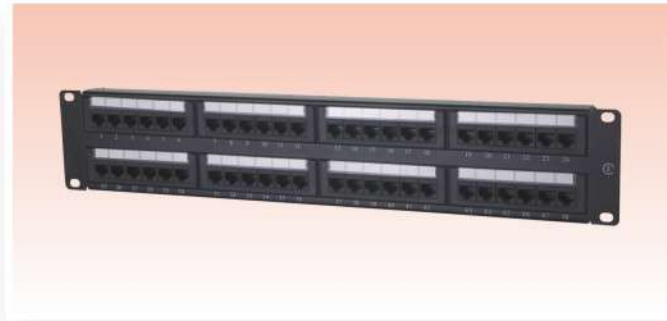
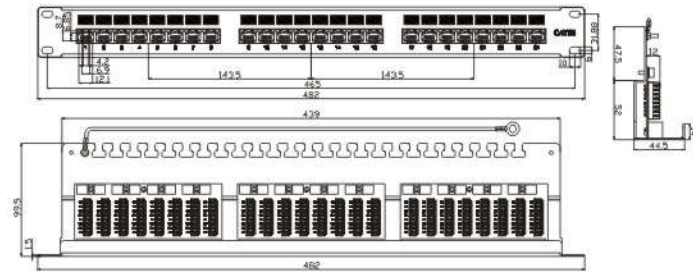


CAT.5E Unshielded Patch Panel

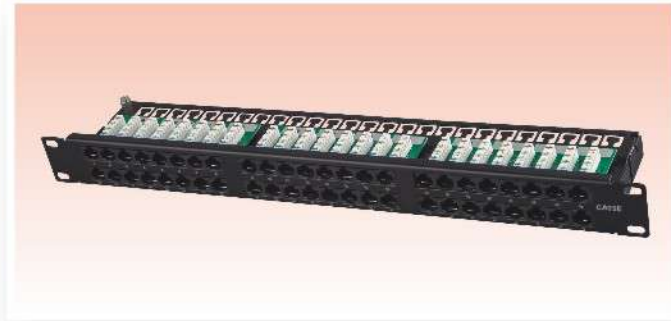
Simante Network
Communication Equipment



SMT-2030K24C5E



SMT-2012D48C5E



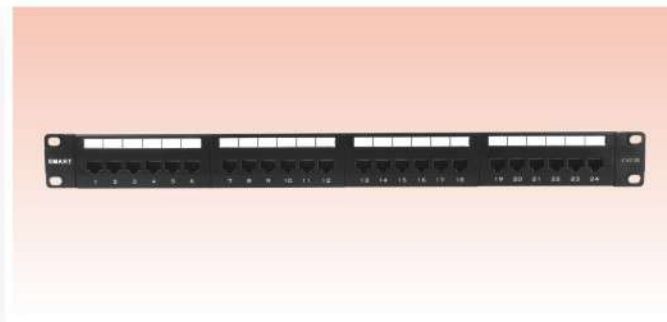
SMT-2020K48C5E



SMT-2020K24C5E



SMT-2026H24C5E



SMT-2032D24C5E



SMT-2032D48C5E



CAT.5E Shielded Keystone Jack

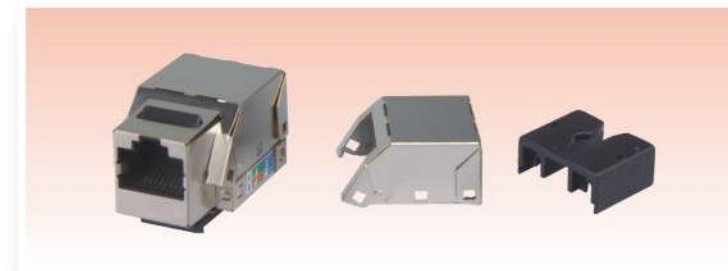
Simante Network
Communication Equipment



SMT-1033T8C5E-FTP



SMT-1041T8C5E-FTP



SMT-1013H8C5E-FTP



SMT-1016D8C5E-FTP

Order Information

Part Number	Description	Inner Box	Carton	Carton Measurement
SMT-1033T8C5E-FTP	CAT.5E FTP Toolless Keystone Jack	50PCS	500PCS	L57*W35*H22CM
SMT-1041T8C5E-FTP	CAT.5E FTP Toolless Keystone Jack	50PCS	500PCS	L57*W35*H22CM
SMT-1016D8C5E-FTP	CAT.5E FTP 110 IDC & Krone IDC Keystone Jack	40PCS	400PCS	L57*W35*H22CM
SMT-1013H8C5E-FTP	CAT.5E FTP 110 IDC Keystone Jack	40PCS	400PCS	L57*W35*H22CM



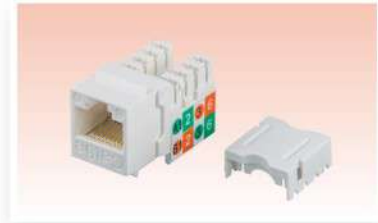
CAT.5E Unshielded Keystone Jack

Simante Network
Communication Equipment



Voice Patch Panel

Simante Network
Communication Equipment



SMT-1014H8C5E
110 IDC



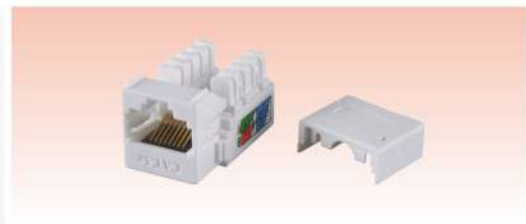
SMT-1013H8C5E
110 IDC



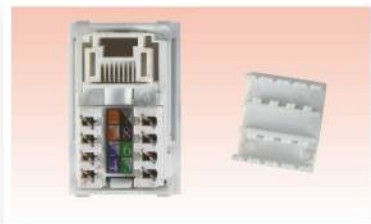
SMT-1033T8C5E
Toolless



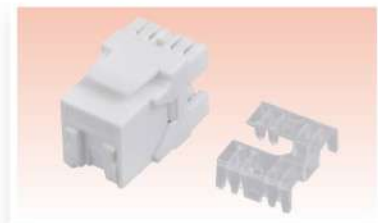
SMT-1016D8C5E
110 & Krone IDC



SMT-1018H8C5E
110 IDC



SMT-1037K8C5E
Krone IDC



SMT-1021D8C5E(B)
110 & Krone IDC



SMT-1021D8C5E
110 & Krone IDC



SMT-1041T8C5E
Toolless IDC



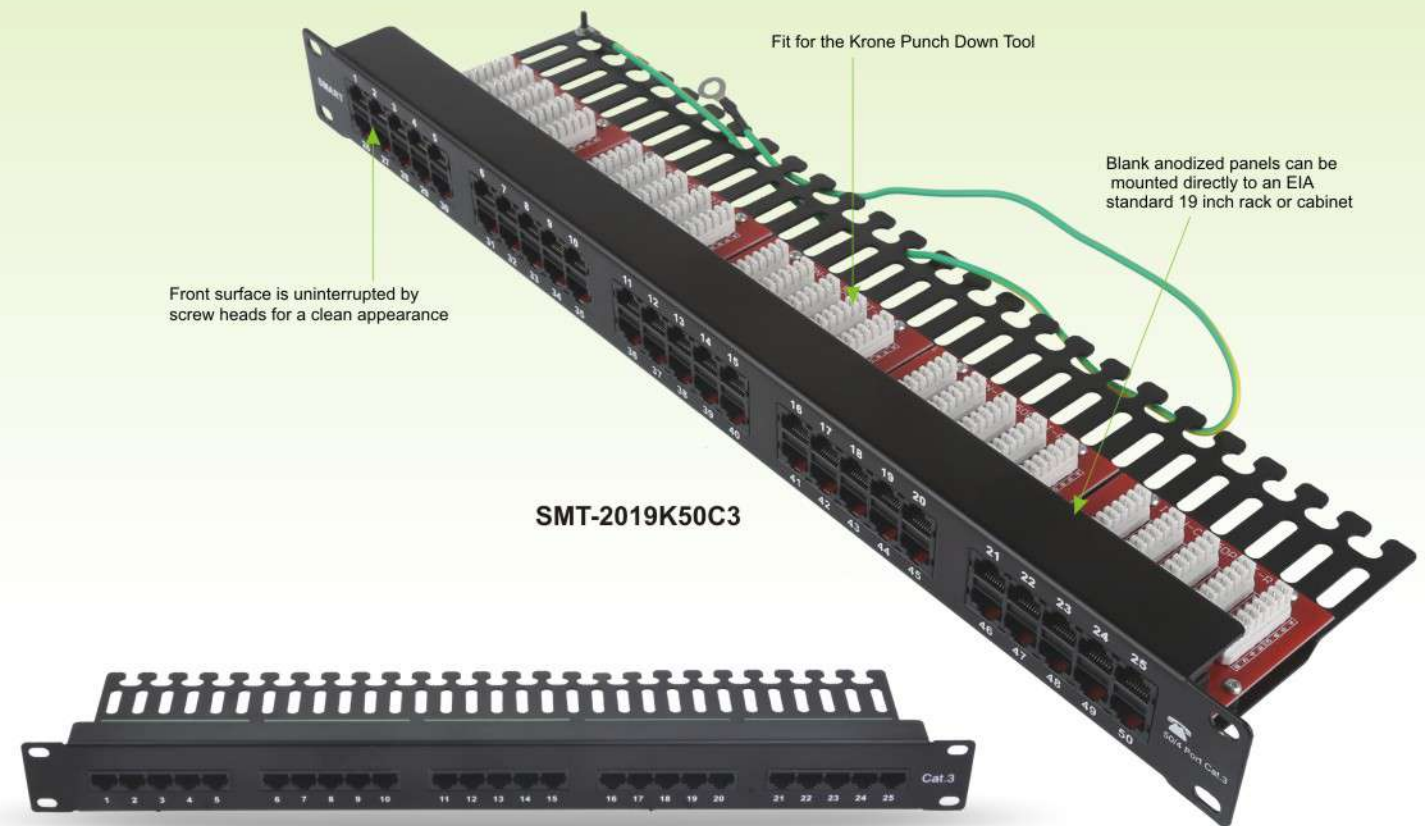
SMT-1012T8C5E
Toolless



SMT-1017T8C5E
Toolless



SMT-1034T8C5E
Toolless



Products Description

SMART's voice patch panels are the perfect solutions for bring voice to your cable rack, pre-configured in 25 and 50 port densities and designed specifically for voice grade application.

Features and Benefits

- Design to mount to any standard 19" rack or cabinet
- Space saving, high-density 1U
- 110 & Krone punch down tools are available
- Phosphor bronze with 3-50 micro inches gold plated
- Metal sheet: Corrosion resistant steel
- Plastic: Fire self-extinguish high-impact plastic

Installment Instruction



Insert each wire into the appropriate channel



Terminate wires using SMART tool (SMT-303) or equivalent



Check and ensure each wire in correct slot



Insert the jack into the correct mounting location properly

Order Information

Part Number	Description	Inner Box	Carton	Carton Measurement
SMT-2019K25C3	CAT.3 25 Port Krone IDC Patch Panel	1PCS	10PCS	L55*W36*H27CM
SMT-2019K50C3	CAT.3 50 Port Krone IDC Patch Panel	1PCS	10PCS	L55*W36*H27CM



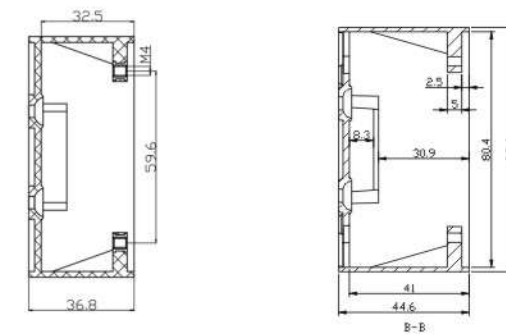
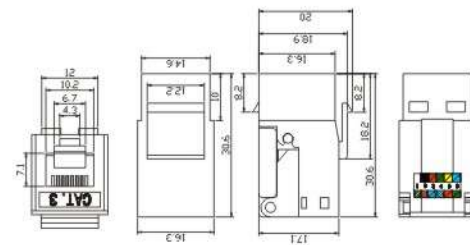
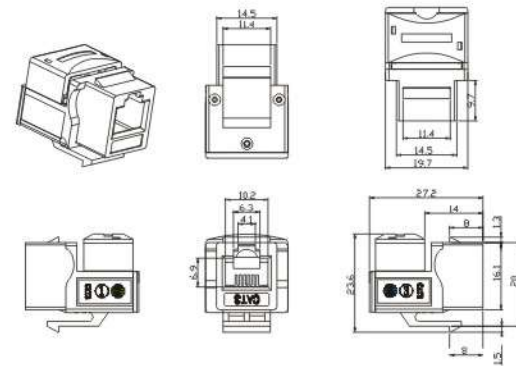
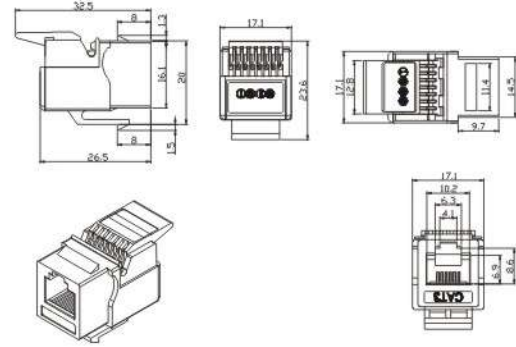
Voice Keystone Jack

Simante Network
Communication Equipment



86 Type Faceplate

Simante Network
Communication Equipment



SMT-4014-86D

Order Information

Part Number	Description	Inner Box	Carton	Carton Measurement
SMT-1012T4C3	CAT.3 Toolless Keystone Jack	50PCS	500PCS	L53*W32*H23CM
SMT-1013H4C3	CAT.3 110 IDC Keystone Jack	50PCS	500PCS	L53*W32*H23CM
SMT-1017T6C3	CAT.3 Toolless Keystone Jack	50PCS	500PCS	L57*W35*H22CM

Order Information

Part Number	Description	Outer Dimension (L * W)(MM)
SMT-4313AP-86-1P	1 Port Faceplate	86*86
SMT-4313AP-86-2P	2 Port Faceplate	86*86
SMT-4313AP-86-1P(B)	1 Port Faceplate	86*86
SMT-4313AP-86-2P(B)	2 Port Faceplate	86*86
SMT-4014-86D	86*86*36 Back Box	86*86*36
SMT-4014-86(B)	86*86*45 Back Box	86*86*45



86 Type Faceplate

Simante Network
Communication Equipment



SMT-4318-86



SMT-4320-86

Order Information

Part Number	Description	Outer Dimension (L * W)(MM)
SMT-4318AP-86-1P	1 Port Faceplate	86*86
SMT-4318AP-86-2P	2 Port Faceplate	86*86
SMT-4318AP-86-3P	3 Port Faceplate	86*86
SMT-4318AP-86-4P	4 Port Faceplate	86*86
SMT-4320AP-86-1P	1 Port Faceplate	86*86
SMT-4320AP-86-2P	2 Port Faceplate	86*86
SMT-4320AP-86-3P	3 Port Faceplate	86*86
SMT-4320AP-86-4P	4 Port Faceplate	86*86



Germany Type Faceplate

Simante Network
Communication Equipment



SMT-4309



SMT-4308

Order Information

Part Number	Description	Outer Dimension (L * W)(MM)	Inner Dimension (L * W)(MM)
SMT-4308-80F-1X	One Port Germany Bevelled Faceplate	80*80	50*50
SMT-4308-80F-2X	Two Port Germany Bevelled Faceplate	80*80	50*50
SMT-4308-80F-3X	Three Port Germany Bevelled Faceplate	80*80	50*50
SMT-4309-80F-HC6A	CAT.6A FTP Wall Outlet, Horizontal Insertion	80*80	50*50
SMT-4309-80F-VC6A	CAT.6A FTP Wall Outlet, Vertical Insertion	80*80	50*50
SMT-4309-80F-HC6	CAT.6 FTP Wall Outlet, Horizontal Insertion	80*80	50*50
SMT-4309-80F-VC6	CAT.6 FTP Wall Outlet, Vertical Insertion	80*80	50*50
SMT-4013-80D	80*80*40 Back Box	80*80*40	



French Type Faceplate

Simante Network
Communication Equipment



SMT-4316



SMT-4311



SMT-4312

Order Information

Part Number	Description	Outer Dimension (L * W)(MM)
SMT-4316-45-1P	Single Port Faceplate	45*45
SMT-4316-45-2P	Dual Port Faceplate	45*45
SMT-4316-80F	FTP Frame	80*80
SMT-4316-86F	FTP Frame	86*86
SMT-4311-45-1P	Single Port Flat Faceplate	45*45
SMT-4311-45-2P	Dual Port Flat Faceplate	45*45
SMT-4312-45-2P	Dual Port Angled Faceplate	45*45



French Type Faceplate

Simante Network
Communication Equipment



SMT-4316-45C6
CAT6 45X45 Faceplate



SMT-4315-45C5E
CAT5E 45X22.5 Faceplate



SMT-4315-45C6ND
CAT6 45X22.5 Faceplate



SMT-4316-45C6ND
CAT6 45X45 Faceplate



SMT-4315-45C3
CAT6 45X22.5 Faceplate



SMT-4316-45C3
CAT3 45X45 Faceplate



SMT-4315-BK
45X22.5 Blank

Technical Details

45x45mm/45x22.5mm Faceplate Jack
Material: Fireproof PC,UL94V-0
Color: pure white
LSA IDC
With matched frame & back box



UK Type Faceplate

Simante Network
Communication Equipment



Features:

- UK Faceplate, 86*86/86*146mm
- Material: Fireproof ABS, UL94V-0
- Color: pure white
- High quality



Order Information

Part Number	Description	Smooth or Matt	Outer Size (L * W)(MM)
SMT-4305-86X	One Gang Beveled Frame	Smooth & Matt	86*86
SMT-4305-86P	One Gang Flat Frame	Smooth & Matt	86*86
SMT-4305-140X	Two Gang Beveled Frame	Smooth & Matt	146*86
SMT-4305-140P	Two Gang Flat Frame	Smooth & Matt	146*86
SMT-BK-50	1/2 Blank Bezel	Smooth & Matt	50*25
SMT-BK-12.5	1/4 Blank Bezel	Smooth & Matt	50*12.5
SMT-BK-38	6C Blank Bezel	Smooth & Matt	38*12.5
SMT-1035K8C6	CAT.6 Shutter Module	Smooth	50*25
SMT-1040K8C6	CAT.6 Shutter Module	Smooth	50*25
SMT-1037K8C6	6C CAT.6 Shutter Module	Smooth	38*25
SMT-4310-50X	Beveled Keystone Adapter	Smooth & Matt	50*25
SMT-4310-50P	Flat Keystone Adapter	Smooth & Matt	50*25
SMT-4310-50X(B)	Beveled Keystone Adapter	Matt	50*25
SMT-4310-50P(B)	Flat Keystone Adapter	Matt	50*25
SMT-4310-38P	6C Flat Keystone Adapter	Smooth	38*25
SMT-4310-38X(B)	6C Beveled Keystone Adapter	Matt	38*25
SMT-4310-38P(B)	6C Flat Keystone Adapter	Matt	38*25



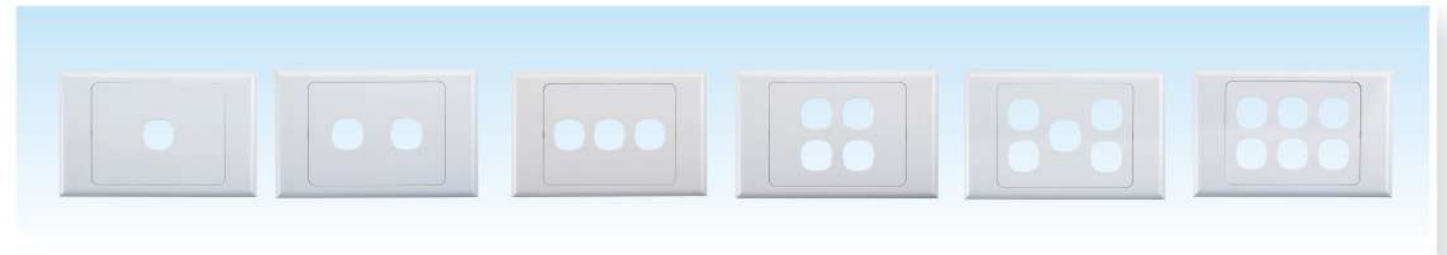
Australia Type Faceplate

Simante Network
Communication Equipment

Australia Faceplate

Description

The wall plate is made from High-Impact Flame Retardant Plastic, house different Australia Type Keystone Jacks and "F" Type connector, and then you can select and snap in according to your needs.



Order Information

Part Number	Description	Outer Dimension(L*W)(MM)
SMT-4304-120-1P	Australia Faceplate, One Port	115 x 74
SMT-4304-120-2P	Australia Faceplate, Two Port	115 x 74
SMT-4304-120-3P	Australia Faceplate, Three Port	115 x 74
SMT-4304-120-4P	Australia Faceplate, Four Port	115 x 74
SMT-4304-120-5P	Australia Faceplate, Five Port	115 x 74
SMT-4304-120-6P	Australia Faceplate, Six Port	115 x 74

Technical Details

- Housing: High-Impact Flame Retardant Plastic, UL94V-0
- Color: Ivory or White
- Smooth surface is uninterrupted by screws heads for a clear appearance.

RJ45 Keystone Jack & "F" Type Connector



Order Information

Part Number	Description
SMT-1027D8C6	CAT.6 Keystone Jack with Special Tool
SMT-1021D8C6A-AU	CAT.6A Keystone Jack, 110 & Krone IDC, 180 Degree
SMT-4304F-1	"F" Type TV Connector
SMT-BK-AU	Blank Panel





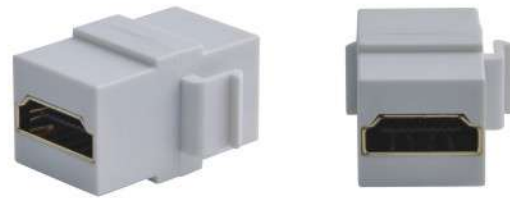
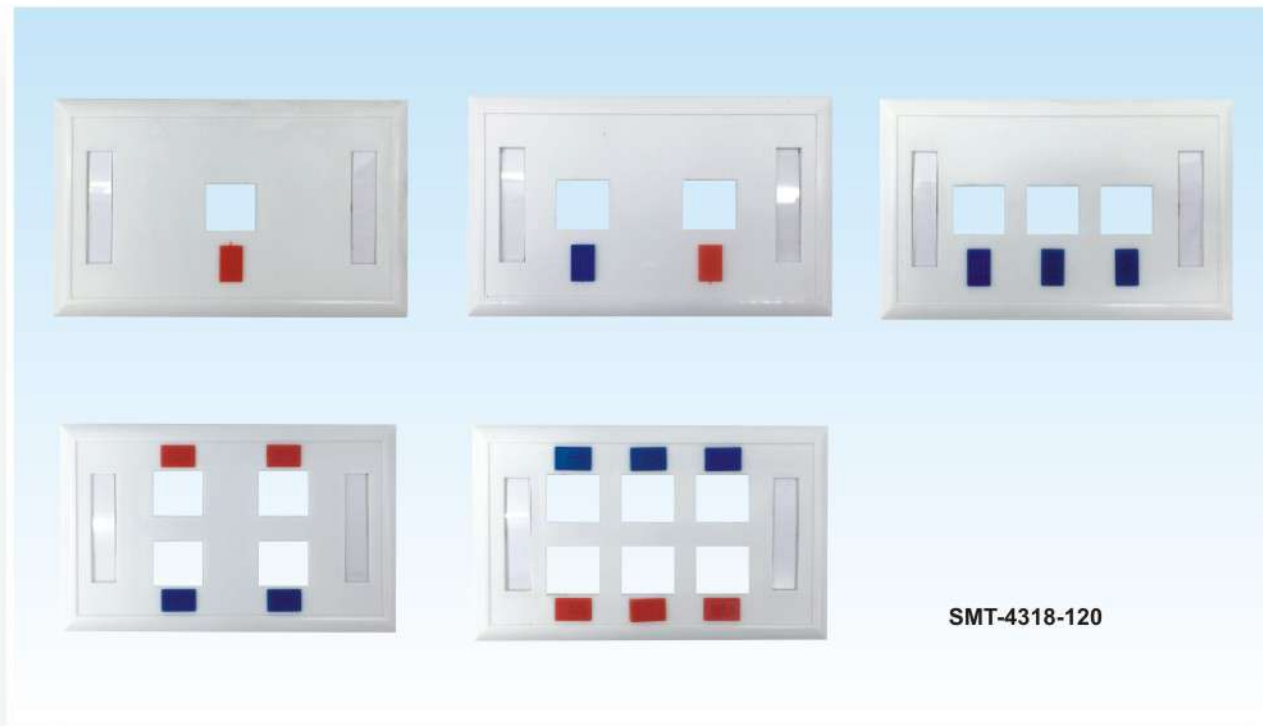
US Type Faceplate

Simante Network
Communication Equipment



Surface Mount Box

Simante Network
Communication Equipment



SMT-HDMI-F01

Order Information

Part Number	Description	Outer Dimension(L*W)(MM)
SMT-4318-120-1P	1 Port American Faceplate	114*70
SMT-4318-120-2P	2 Port American Faceplate	114*70
SMT-4318-120-3P	3 Port American Faceplate	114*70
SMT-4318-120-4P	4 Port American Faceplate	114*70
SMT-4318-120-6P	6 Port American Faceplate	114*70
SMT-HDMI-F01	HDMI-Connector	-*-



Order Information

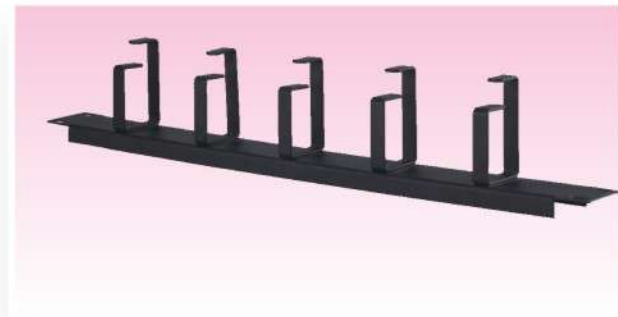
Part Number	Description	Outer Dimension(L*W)(MM)
SMT-4401-1P(B)	1 Port Shuttered Surface Mount Box, Without Jack	65*48*26
SMT-4401-2P(B)	2 Port Shuttered Surface Mount Box, Without Jack	76*65*26
SMT-4402-1PC6	CAT.6 UTP 1 Port Surface Mount Box, With PCB	60*42*26
SMT-4402-2PC6	CAT.6 UTP 2 Port Surface Mount Box, With PCB	60*67*26
SMT-4402-1PC5E	CAT.5E UTP 1 Port Surface Mount Box, With PCB	60*42*26
SMT-4402-2PC5E	CAT.5E UTP 2 Port Surface Mount Box, With PCB	60*67*26
SMT-4402-1PC6-FTP	CAT.6 FTP 1 Port Surface Mount Box, With PCB	60*42*26
SMT-4402-2PC6-FTP	CAT.6 FTP 2 Port Surface Mount Box, With PCB	60*67*26



Cable Manager

Simante Network
Communication Equipment

"For routing and bundling cable on standard 19" rack, makes a complete cable management system when used with vertical and horizontal cable managers"



SMT-3010-5P
D-rings Cable Manger



SMT-3010-12P
12 Rings Metal Cable Manager



SMT-3010-25P
25 Rings Metal Cable Manger



SMT-3010-24P
24 Rings Metal Cable Manger



SMT-3010-12S
12 Ring Plastic Cable Manager

Technical Details

- Mounts Horizontal on Standard 19" Cabinet.
- Material: CRS
- Color: Black

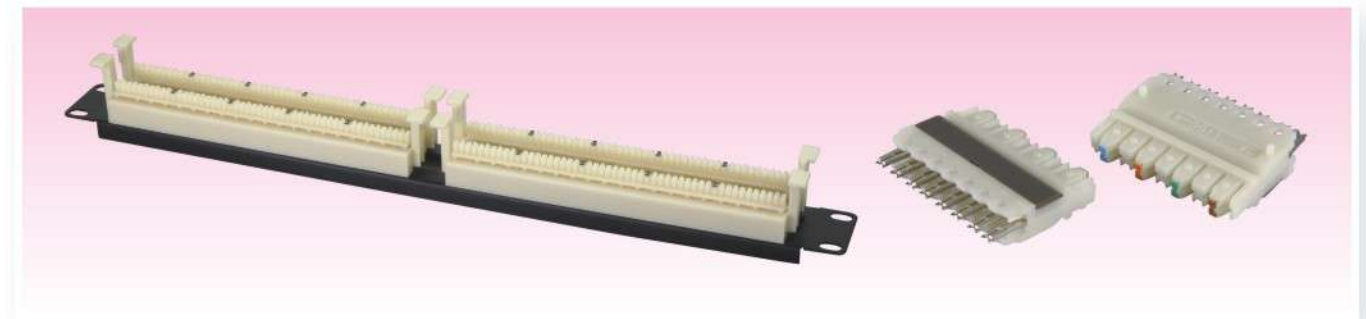
Order Information

Part Number	Description	Dimension (W * D)(MM)	Installation Size(MM)
SMT-3010-5P	D-rings Metal Cable Manager	483*44	464
SMT-3010-12P	12-Rings Metal Cable Manager	483*44	464
SMT-3010-25P	25-Rings Metal Cable Manager	483*44	464
SMT-3010-24P	24-Rings Metal Cable Manager	483*44	464
SMT-3010-12S	12 Ring Plastic Cable Manager	483*44	464



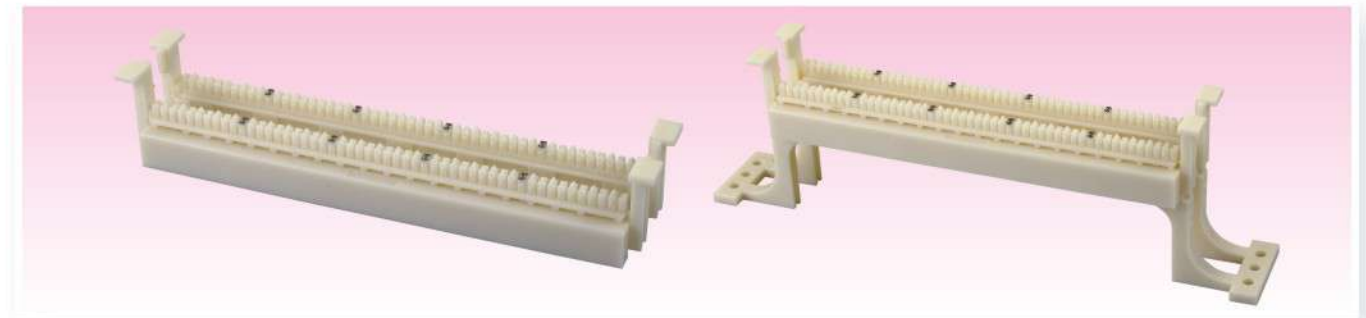
110 Wiring Block

Simante Network
Communication Equipment



Technical Details

- Mounts Horizontal on Standard 19" Cabinet.
- 100 Pairs



Technical Details

- With Legs Or Without Legs
- 50 Pairs

Order Information

Part Number	Specification
SMT-3009D-100P	100 Pairs 100 Wiring Block
SMT-3009D-50P	50 Pairs 100 Wiring Block
SMT-3009A-50P	50 Pairs 100 Wiring Block with legs



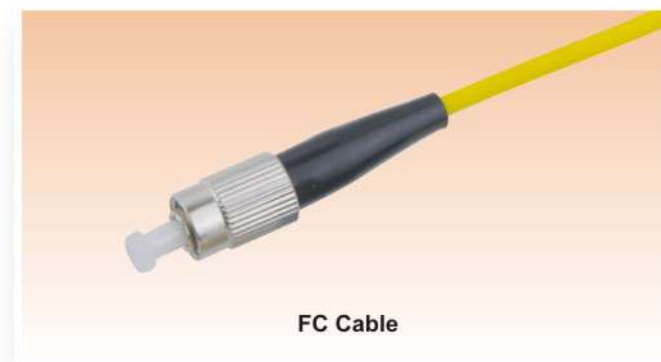
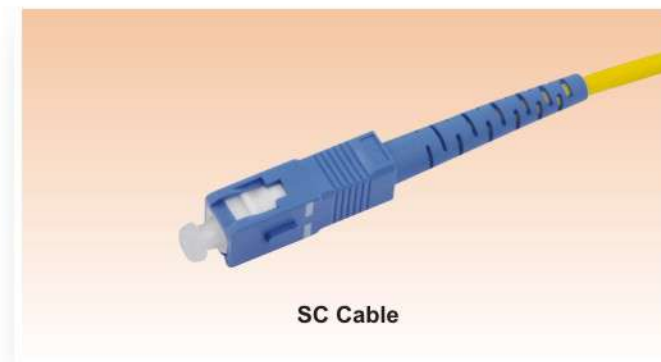
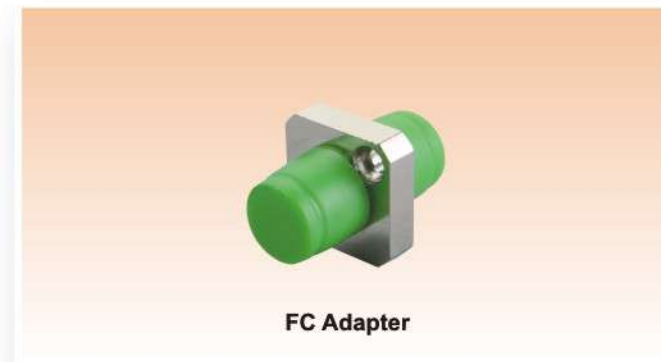
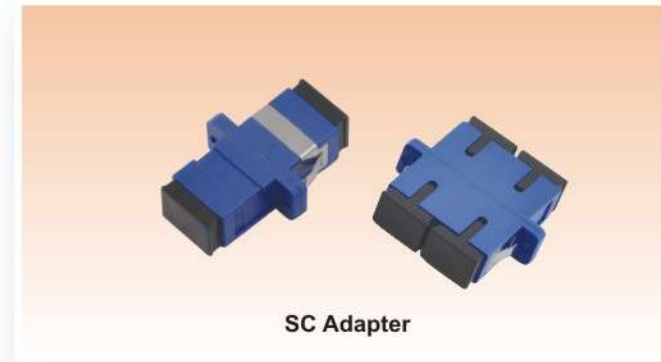
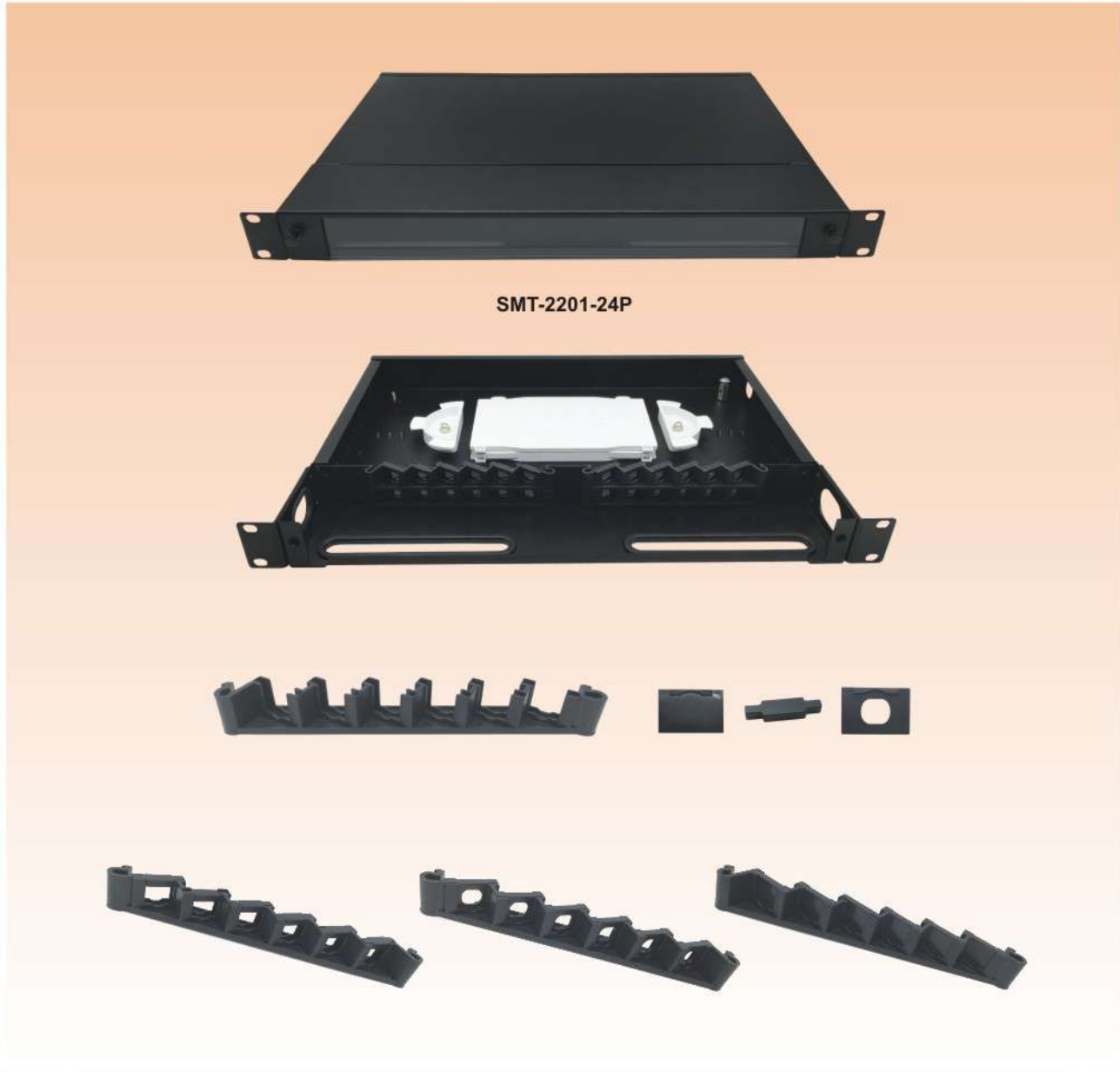
Fiber Patch Panel

Simante Network
Communication Equipment



Fiber Adapter & Cable

Simante Network
Communication Equipment





Fiber Optic Faceplate

Simante Network
Communication Equipment



Fiber Optic Mount Box

Simante Network
Communication Equipment



SMT-4307SC-1P

SMT-4307SC-2P

SMT-4307ST-2P

Technical Details

- Housing: High-impact Flame Retardant Plastic

Order Information

Part Number	Description
SMT-4307SC-86-1P	86 x 86 Flat Faceplate fit for SC connector, One Port
SMT-4307SC-86-2P	86 x 86 Flat Faceplate fit for SC connector, Two Port
SMT-4307ST-86-2P	86 x 86 Flat Faceplate fit for ST connector, Two Port



SMT-4307SC-86D

Description

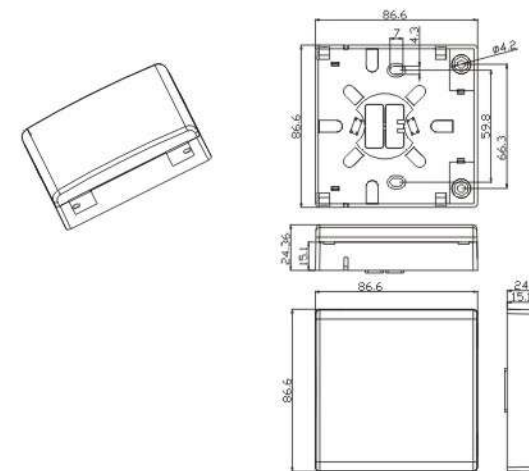
- HTB is made of engineering plastic.
- HTB could be installed on the wall, and it is dust-proof & insect-proof.
- Compatible with $\Phi 2.0$ -3.0mm pigtail & 3.0 mm x 2.0mm indoor drop cable, cable can be led from up, down left and right and back side of the box.
- Dimension is 86x86x24.5(LxWxH)mm

Technical Details

- Compatible with SC adapters and field assembly connector.
- Fiber capacity is 2fibers.
- Compatible with fusion splicing and mechanical splicing to connect the fiber.
- Compact size, with enough space to store the fiber.
- Wall mounting and desktop installation.
- FTTx applications

International Standards

- Comply with EN 60950-1, IEC 60529, IEC 62134-1, ITU.TL.51, Telcordia GR-1209-Core, Telcordia GR-1221-Core, UL94 etc international standards and GB/T 2423, GB/T 3873, GB/T 9286, GB 4208 etc China national standard.





Network Tools

Simante Network
Communication Equipment



SMT-302 **Cable Stripper** (122mm)

Products Description

The cable stripping tool is designed to reduce the time required to prepare both coaxial and twisted-pair cable for termination. The tool includes an adjustable cutting blade, which is specially designed to accurately strip the jacket from 4-pair cable without damaging the conductors.



SMT-303 **Insertion Tool** (185mm)

Products Description

Krone insertion tools are suitable for clamp modules designed to help reduce fatigue when trimming wire or seating connection blocks to the wiring base.



SMT-304 **Multi-pair 110 Style Impact Tools** (108mm)

Products Description

The 110 5-pair impact tool is designed to seat 110 connecting blocks and terminate and cut UTP cable on 110 wiring blocks. Saving time and money, it makes large termination jobs small by greatly reducing the number of punch cycles. Cartridge is adjustable to cut/no-cut position and terminates 22-26AWG solid and stranded wires with single insulation. Tool also has twist and lock head



SMT-305 **Single Pair 110 Style Impact Tools** (180mm)

Products Description

The 110 single-pair impact tool is designed to seat 110 connecting blocks and terminate and cut cable on 110 wiring blocks. Saving time and money, the tool features an easy way to hold, ergonomically designed handle that helps reduce fatigue when trimming wire or seating connection blocks to the wiring base



SMT-306 **RJ45 and RJ11 Crimp Tools** (192mm)

Products Description

This high-quality ratcheting crimp tool is designed to crimp and cut quickly the wires of the RJ45 connector. The parallel action design maintains accurate alignment of the die with the plug for a precision crimp every time.



SMT-307 **Punch Down Tool** (185mm)

Products Description

It is suitable for connecting cables modules and distribution frames. Various products make the job more convenient. Specially-made tool head ensures durability. Combination hook



Network Tools

Simante Network
Communication Equipment



SMT-301 **RJ 45 & RJ 11 Cable Tester**

Products Description

Available for RJ 45 (UTP/STP) and RJ11 modular cables



SMT-308 **Punch down tool** (155mm)

Products Description

Use on telecom terminal block



SMT-309 **Dual-Modular Plug Crimp, Strip & Cut tool** (192mm)

Products Description

Straight motion & professional type, provide precise operation with key way in 8P modular holder. Modular holders are made of AL-ZN Alloy light weight & durable. Suitable for both stranded & solid wire. (UTP/STP) Ratchet: YES



SMT-310 **Ways Modular Tool: Crimp, Strip & Cut** (200mm)

Products Description

Steel frame, hardened & black oxide finished, light weight & durable. Deluxe type, w/guide for operation. An additional locker for storage after work



SMT-311 **Dual-Modular Plug Crimp, Strip & Cut Tool** (185mm)

Products Description

Deluxe type, frame is made of steel, light weight, compact & durable w/key way in 8P modular holder. Ratchet: YES



SMT-312 **Easy Stripper for UTP / STP Telecom Wire** (89mm)

Products Description

For stripping wire diameter 5-6.2mm. Top end for 110/88 type insertion use



Rj45 Male Connector

Simante Network
Communication Equipment



Cabinet
Simante Network
Communication Equipment



SMT-5004M8C5E
CAT. 5E UTP Connector



SMT-5004M8C5E-FTP
CAT. 5E FTP Connector



SMT-5005M8C6
CAT. 6 UTP Connector



SMT-5005M8C6-FTP
CAT. 6 FTP Connector



SMT-5006M8C6A-FTP
Silvery CAT. 6A FTP Connector



SMT-5007M8C6A-FTP
Golden CAT. 6A FTP Connector



SMT-HT01C6
Boot



SMT-HT01C5E
Boot



SMT-3110-4U

Products Description

Wall mounted cabinet rigid frame structure with load rating of 60 KG, cable entry from top and bottom, front section with glass door keys and locks, quickly removable side panels, provision for optional lock, construction from 1mm steel and frames 2mm steel, fan optional with effective ventilation, 2 pairs of 19"movable vertical extrusion

Features and Benefits

- Variety of height
- 600mm wide body
- Venting top and bottom
- With tempered glass locking doors
- The door can be quickly removed on side for easy cabinet installation and can be re-hinged from either side (no tools are required)
- Mounting panel on the rear, easily installing
- Inside lock, quickly removable side door
- Installation can be optional for standing or wall mounting
- Feet and castors can be provided for standing



SMT-3112-42U

Products Description

Standing network cabinet is a cost effective cabinet that can be installed in equipment rooms or in office environments where aesthetics are import. The standing network cabinets is available in a variety of heights and colors and are designed for mounting telecommunications, data communications, security, broadcast and other 19" electronic equipment.

Features and Benefits

- Exquisite design with precision dimensions and craftsmanship
- Arc vented front/rear doors enable ventilation and reliable operation
- Swiveling wheels and legs can be jointly installed to withstand up to 800kg maximum carrying capacity and 350kg carrying capacity
- Easy-to disassemble front/rear/left/right doors enable convenient operation from any side of the cabinet

Order Information

Part Number	Description	Carton	Carton Measurement
SMT-3110-4U	4U Wall Cabinet	1 PCS	L62*W47*H39CM
SMT-3112-42U	42U Standing Cabinet	1 PCS	L62*W102*H205CM



Rj45 Male Connector

Simante Network
Communication Equipment



Cabinet

Simante Network
Communication Equipment



Category 7 Jumper



Category 7 Shielded Jumper



Cat6e Shielded Jumper



Super Six Unshielded Jumpers



Super Seven Shielded Network Cable



Category 7 Shielded Network Cable



Category 7 Network Cable



Super Six Shielded Network Cable